

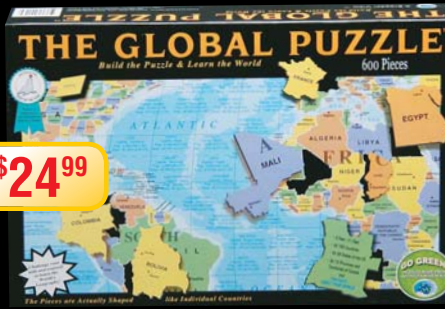
## JIGSAWS



**\$29.99** each  
WERE \$49.99

### PUZZLEBALLS 9"

One of the best jigsaw challenges available - Puzzleball - the 3D sphere puzzle. 4 brilliant 540pc puzzles to choose from at this sensational price!



**\$24.99**

### GLOBAL PUZZLE

The pieces are actually shaped like the individual countries - build the puzzle, & learn the world!



**\$14.99** each  
WERE \$24.99

### BRIAN NASH COLLECTION

The artwork of Australian artist Brian Nash excels in these 4 superb puzzles, featuring period Australian homes from four different eras.



**\$14.99** each  
WERE \$29.99

### WORLD'S MOST DIFFICULT

The original double-sided puzzle, with the same artwork on both sides! 3 incredibly frustrating puzzles to choose from.



**\$19.99** each

### JENNY SANDERS

Four wonderful new puzzles from Australian artist Jenny Sanders, all featuring classic early model Holden cars in country settings.



**\$24.99** each

**SPECIAL**

### IMPOSSIBLES

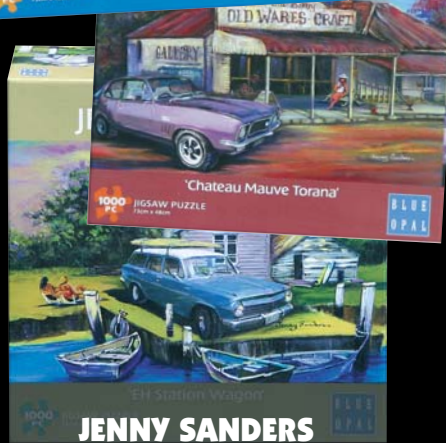
The borderless puzzle with 5 extra pieces. Strictly for the expert - 3 challenging titles to choose from.



**\$12.99** each

### MYSTERY PUZZLES

Read the story, assemble the puzzle, & put your sleuthing skills to the test to solve the diabolical whodunit mystery! 6 to choose from.



**\$29.99** each

### WASGIJ?

The Wasgij? range just never stops growing! Now you have the choice of 8 original Wasgij?, 5 Wasgij? Destiny puzzles, and 4 Wasgij? Mystery as well.



**\$9.99** each

### SPORTS BALLS

The original 3D sphere puzzle - now available as Sports Balls. Each challenging puzzle is 60pc, and 7.5cm diameter.



**\$19.99**  
NORMALLY \$27.99

### JIGSAW ROLL

Easy to use & store - an ingenious solution to the unfinished jigsaw puzzle! Suits up to 2000pc puzzles.



**\$27.99** each

### KEN DUNCAN

A whole new range by Australia's leading panoramic landscape photographer, featuring his incredible camera-work, but with 4 amazing Lenticular images!